

FEEDBACK FROM FACULTY: RESPONSES

2019-20

QUESTIONNAIRE:

This form is prepared by the Internal Quality Assurance Cell of Bishop Moore College, Mavelikara. Your valuable opinions and suggestions are solicited for further improvement of the college system. Against each statement a five-point scale is given as below:

Strongly Agree

Agree

Neutral

Disagree

Strongly Disagree

- I. Curriculum Design and Development
 - a. The system followed by the University for the design and development of curriculum is effective.
 - b. The curriculum has been updated from time to time.
 - c. Employability is given weightage in curriculum design and development.
 - d. I am given enough freedom to contribute my ideas on curriculum design and development.
 - e. Board of studies is taking care to ensure the currency and relevance of the programme offering.
 - f. Representation from business and industry in PG Boards of studies is helpful in designing and improving the courses.

- II. TEACHING, LEARNING, EVALUATION & RESEARCH
 - a. The admission process adopted by the University is effective.
 - b. The University is able to attract meritorious students.
 - c. Student centered learning resources are available in the College
 - d. The class work is taking place as per schedule.
 - e. The teaching aids in the department are sufficient and up to date.
 - f. The library is utilized optimally by the faculty.
 - g. The library is utilized optimally by the students.
 - h. The teachers are supported with adequate learning resources.
 - i. The teachers are encouraged to carry out research.
 - j. The teachers are encouraged to organize seminars/workshops/symposia/conferences.
 - k. The teachers are encouraged to participate in seminars/workshops/symposia/conferences.
 - l. The teachers are encouraged to undertake extension service programmes.
 - m. The teachers are encouraged to establish linkage with Industry.
 - n. The teachers are encouraged to take-up consultancy services.

- o. The examination system followed by the University is effective.
- p. The evaluation system followed by the University is effective.
- q. The Internal examination system followed by the College is effective.
- r. The Evaluation system followed by the College is effective.

III. **INFRASTRUCTURE**

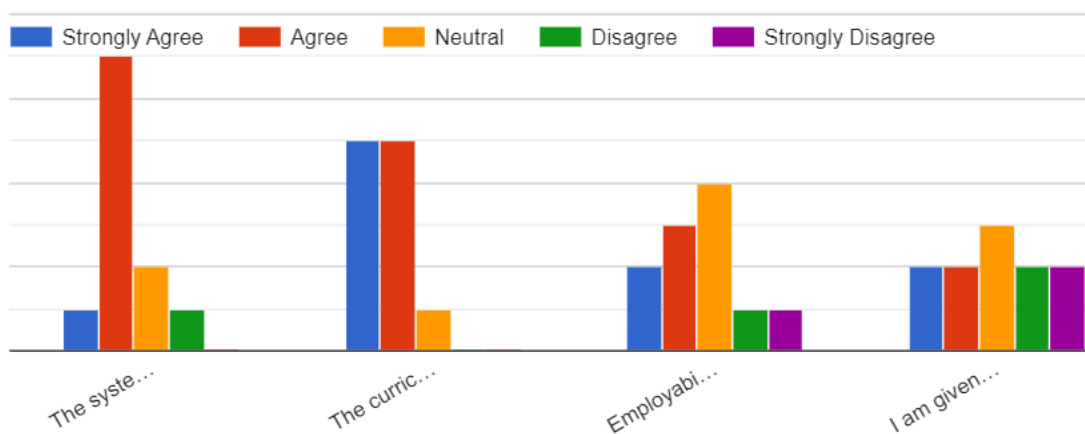
- a. The class rooms and furniture available are adequate.
- b. The toilets are sufficient for faculty and students.
- c. The buildings and furniture are well maintained.
- d. The labs are adequately equipped (wherever applicable).
- e. The infrastructure available in the department is optimally used.
- f. Parking facilities are available adequately.
- g. Roads are maintained well.

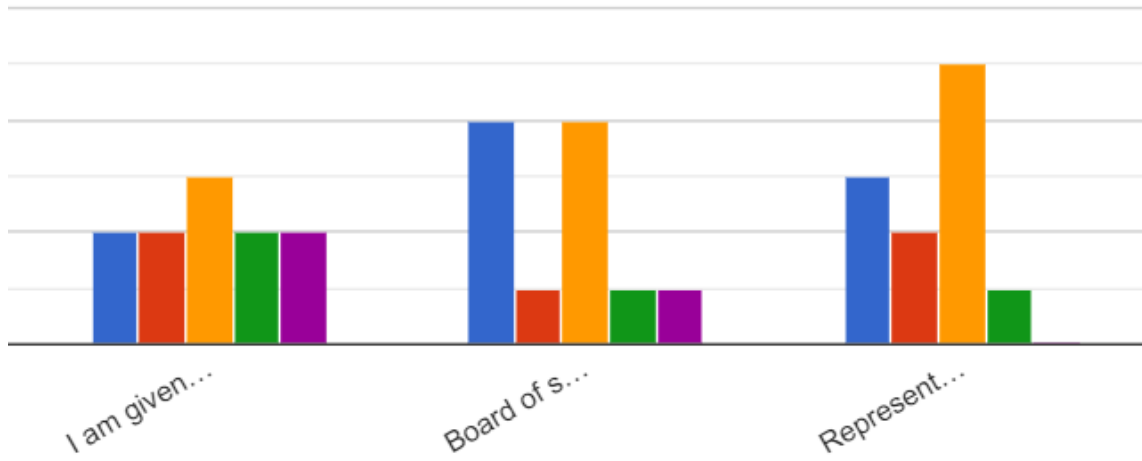
IV. **GOVERNANCE**

- a. The administration is sincerely putting efforts for the development of the institution
- b. The administration is accessible.
- c. The quality initiatives taken up during the last academic year are contributing for improvement.
- d. The MoUs entered by the college enhance the scope for mutual cooperation with Institutions and Research Organizations for repute.
- e. The faculty are given freedom to express their opinions.
- f. The IQAC is working well for promoting quality in the institution.
- g. The College is providing adequate opportunities and support to the faculty and their family members.

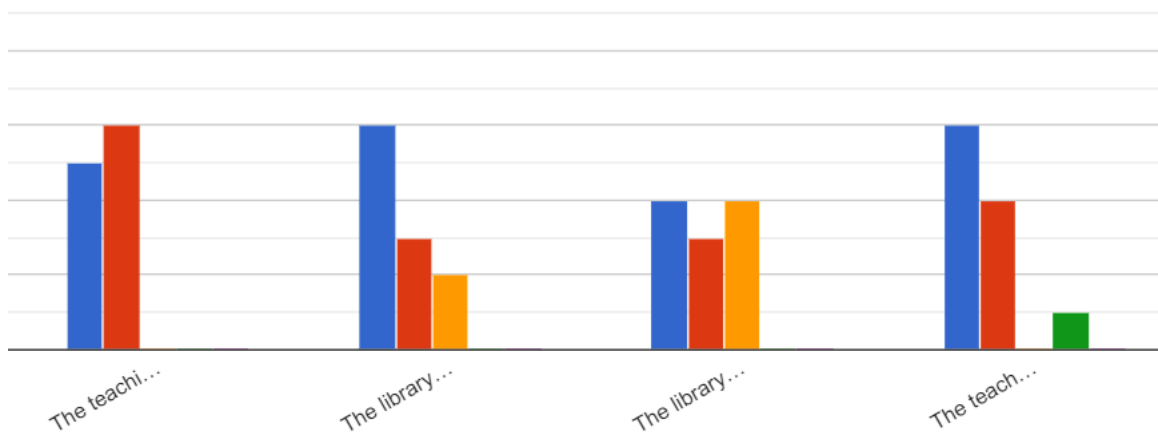
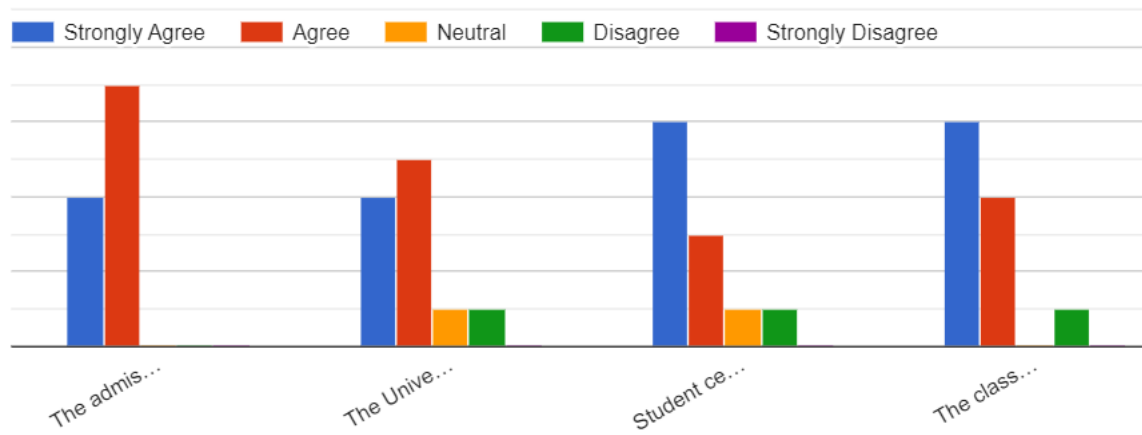
RESPONSES

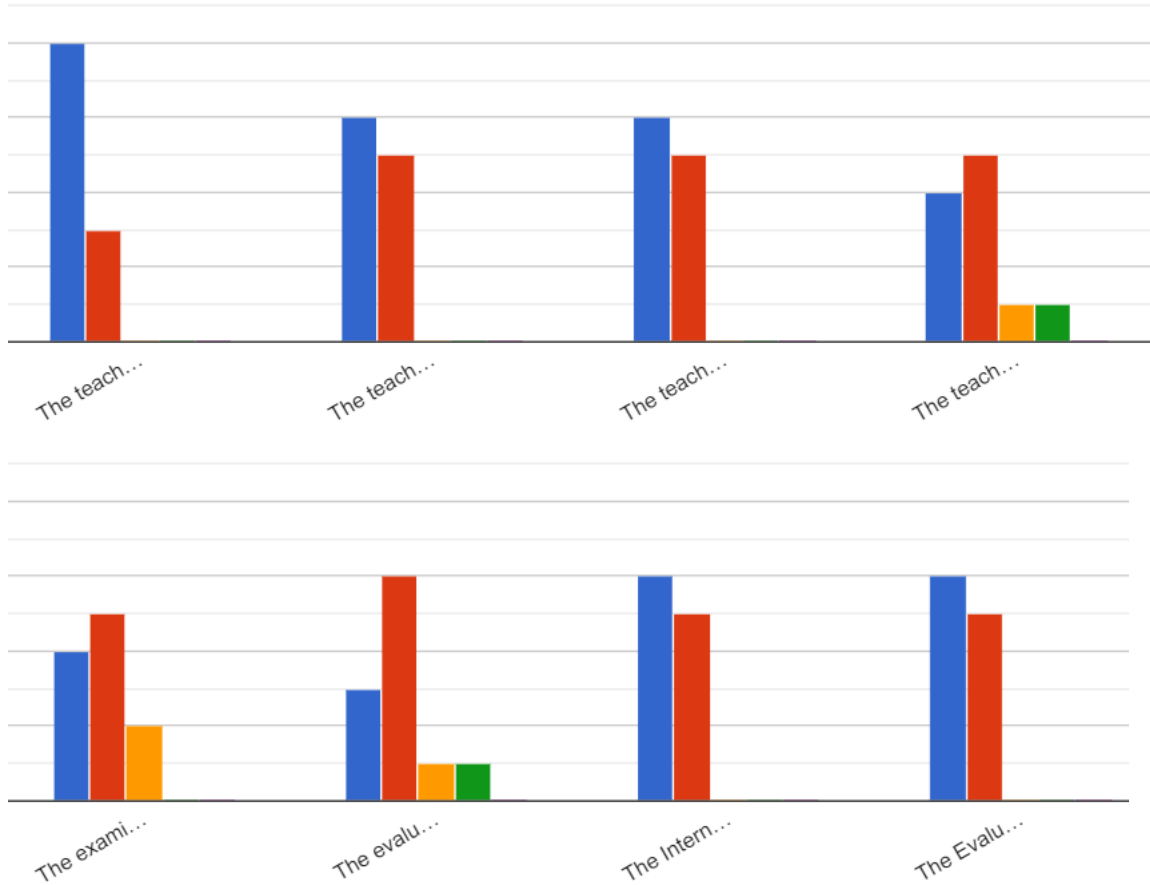
I. **Curriculum Design and Development**



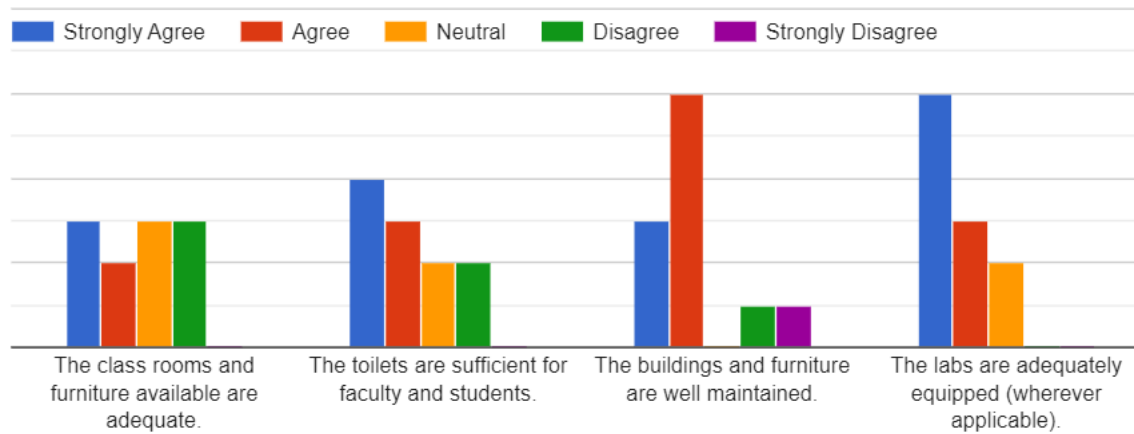


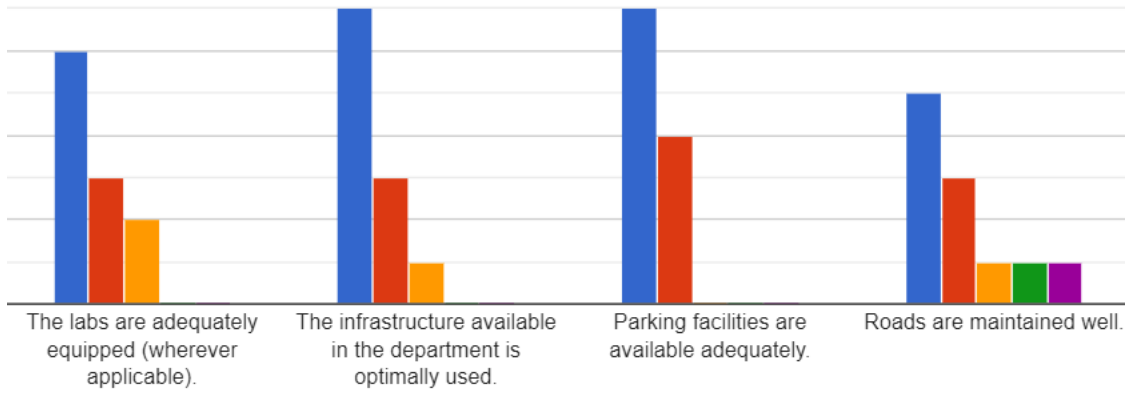
II. TEACHING, LEARNING, EVALUATION & RESEARCH





III. INFRASTRUCTURE





IV. GOVERNANCE

